

**BTN3A1 Antibody (C-term)**  
**Affinity Purified Rabbit Polyclonal Antibody (Pab)**  
**Catalog # AP13499b****Specification**

---

**BTN3A1 Antibody (C-term) - Product Information**

Application	WB,E
Primary Accession	<a href="#">O00481</a>
Other Accession	<a href="#">NP_001138481.1</a> , <a href="#">NP_919423.1</a> , <a href="#">NP_001138480.1</a> , <a href="#">NP_008979.3</a>
Reactivity	Human
Host	Rabbit
Clonality	Polyclonal
Isotype	Rabbit IgG
Calculated MW	57677
Antigen Region	345-374

**BTN3A1 Antibody (C-term) - Additional Information****Gene ID** 11119**Other Names**

Butyrophilin subfamily 3 member A1, CD277, BTN3A1, BTF5

**Target/Specificity**

This BTN3A1 antibody is generated from rabbits immunized with a KLH conjugated synthetic peptide between 345-374 amino acids from the C-terminal region of human BTN3A1.

**Dilution**

WB~~1:1000

E~~Use at an assay dependent concentration.

**Format**

Purified polyclonal antibody supplied in PBS with 0.09% (W/V) sodium azide. This antibody is purified through a protein A column, followed by peptide affinity purification.

**Storage**

Maintain refrigerated at 2-8°C for up to 2 weeks. For long term storage store at -20°C in small aliquots to prevent freeze-thaw cycles.

**Precautions**

BTN3A1 Antibody (C-term) is for research use only and not for use in diagnostic or therapeutic procedures.

**BTN3A1 Antibody (C-term) - Protein Information****Name** BTN3A1

**Synonyms** BTF5

**Function** Plays a role in T-cell activation and in the adaptive immune response. Regulates the proliferation of activated T-cells. Regulates the release of cytokines and IFNG by activated T-cells. Mediates the response of T-cells toward infected and transformed cells that are characterized by high levels of phosphorylated metabolites, such as isopentenyl pyrophosphate.

**Cellular Location**

Cell membrane; Single-pass type I membrane protein

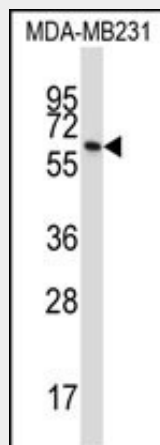
**Tissue Location**

Detected on T-cells, natural killer cells, dendritic cells and macrophages (at protein level). Ubiquitous. Highly expressed in heart, pancreas and lung, Moderately expressed in placenta, liver and muscle.

**BTN3A1 Antibody (C-term) - Protocols**

Provided below are standard protocols that you may find useful for product applications.

- [Western Blot](#)
- [Blocking Peptides](#)
- [Dot Blot](#)
- [Immunohistochemistry](#)
- [Immunofluorescence](#)
- [Immunoprecipitation](#)
- [Flow Cytometry](#)
- [Cell Culture](#)

**BTN3A1 Antibody (C-term) - Images**

BTN3A1 Antibody (C-term) (Cat. #AP13499b) western blot analysis in MDA-MB231 cell line lysates (35ug/lane). This demonstrates the BTN3A1 antibody detected the BTN3A1 protein (arrow).

**BTN3A1 Antibody (C-term) - Background**

The butyrophilin (BTN) genes are a group of major histocompatibility complex (MHC)-associated genes that encode type I membrane proteins with 2 extracellular immunoglobulin (Ig) domains and an intracellular B30.2 (PRYSPRY) domain. Three subfamilies of human BTN genes are located in the MHC class I

region: the single-copy BTN1A1 gene (MIM 601610) and the BTN2 (e.g., BTN2A1; MIM 613590) and BTN3 (e.g., BNT3A1) genes, which have undergone tandem duplication, resulting in 3 copies of each (summary by Smith et al., 2010 [PubMed 20208008]).[supplied by OMIM].

#### **BTN3A1 Antibody (C-term) - References**

Smith, I.A., et al. J. Immunol. 184(7):3514-3525(2010)  
Shi, J., et al. Nature 460(7256):753-757(2009)  
Wang, A.G., et al. Biochem. Biophys. Res. Commun. 345(3):1022-1032(2006)  
Mungall, A.J., et al. Nature 425(6960):805-811(2003)  
Rhodes, D.A., et al. Genomics 71(3):351-362(2001)